



公司简介 Company Introduction

中再生纽维尔资源回收设备（江苏）有限公司，是中国再生资源行业的龙头企业—中国再生资源开发有限公司，和全球废钢破碎机鼻祖—美国纽维尔破碎机有限公司合资组建，共同打造废钢资源回收装备制造行业典范。

从成立之初，中再生纽维尔始终秉承美国纽维尔破碎机的设计制造理念，致力于打造世界领先的废钢破碎机。同时，不断引进全球领先的控制、传动及液压等关键技术和部件，在保证设备优越性能及高质量的前提下，为客户降低设备投资和使用成本，创造更高的经济效益。

目前，中再生纽维尔已经与德国BOSCH、美国ERIEZ、德国SEW、美国ROCKWELL、德国MKS等世界一流企业结为战略合作伙伴关系，同时与德国博世、SKF轴承、雷勃电气、上电集团等近百家国内外知名企业建立了长期合作关系。中再生纽维尔汇聚了从技术、研发、市场及生产制造等各方面的优势资源，实现了废钢资源回收装备行业的强强联合。



China Recycling Newell Equipment (Jiangsu) Co., Ltd. is a joint venture between China Recycling Development Corporation Ltd., the leading enterprise of China recycling industry, and Newell Recycling Equipment of the United States, the shredder originator with globally-leading expertise. The partners are working together to provide world's best equipment to the Chinese scrap processing industry.

Since its inception, China Recycling Newell has taken the designs and the manufacturing philosophy of America Newell shredders, and has been dedicated to building the world-leading scrap shredders. The company aims to reduce the equipment investment and operating costs for customers and create higher economic benefits by continuously introducing the world's leading technology and by using the best quality component parts for gear boxes, magnetic equipment, hydraulic equipment and computer control equipment for the purpose of ensuring superior performance and high quality of equipment.

At present, China Recycling Newell has established strategic partnerships with the world-class enterprises such as BOSCH, ERIEZ, SEW, ROCKWELL, MKS, and long-term cooperative relations with over 100 well-known domestic and foreign enterprises, such as SCHORCH, SKF bearing, REGAL, SHANGHAI ELECTRIC etc. The company has gathered the various resource advantages from technology, R&D, marketing, manufacturing and so on, realized the strong alliance of scrap steel recycling equipment industry.



中再生纽维尔资源回收设备（江苏）有限公司
CHINA RECYCLING NEWELL EQUIPMENT (JIANGSU) CO.,LTD.



公司理念 Company Philosophy

中再生纽维尔致力于引进国外先进技术，发展废钢铁资源回收设备领域，重点开发、研究、创新、改革技术和产品，打造属于中再生纽维尔公司的新产品、新方案、新模式，并始终向成为废钢资源回收设备行业领军企业奋力前进。同时，希望通过中再生纽维尔人的努力，能够有力推进中国废钢铁行业规范化、工业化、产品化进程，大力提升废旧金属再利用技术和装备水平。

当前，中国正在大力推进供给侧结构性改革，中再生纽维尔将充分发挥自身技术和资源优势，抢抓发展机遇，紧扣市场需求，加快新产品研发。凝聚直面挑战、干事创业、自主创新、引领发展的精神，致力于与广大客户一道开创合作共赢的互利局面。

随着行业的迅猛发展，市场竞争日趋激烈，机遇与挑战并存。中再生纽维尔人坚信，只要以满足客户的需求为已任，推进自身不断改革升级，竭诚为广大客户提供最专业的设备、最满意的服务，定能实现辉煌发展。

China Recycling Newell is dedicated to the introduction of foreign advanced technology and the development in the field of scrap recycling equipment. We are focusing on the development, research, innovation, reform of technology and products, to create new products, new programs, new models belong to China Recycling Newell, and always striving to become a leader in the scrap recycling equipment industry. We hope that through the everlasting efforts of all the Newell staffs, we can promote the process of standardization, industrialization and higher productivity of Chinese scrap industry, and greatly improve the level of scrap metal recycling technology and equipment.

Currently, as China is vigorously promoting the Supply-side Structural Reform, China Recycling Newell will give full play to its own technology and resource advantages, grasp the development opportunity, keep up with the market demand, speed up the R&D of new products, promote the spirit of facing up to challenges, independent innovation and leading development, to work with our customers to create win-win cooperation and mutual benefit.

With the rapid development of the industry, the market competition is increasingly fierce and opportunities and challenges coexist, China Recycling Newell firmly believe that we will be able to achieve a new glory development as long as to meet the customers' needs, promote the continuous reform and upgrading, provide customers with the most professional equipment and satisfactory service.



产品分类

Product Classification

破碎机生产线

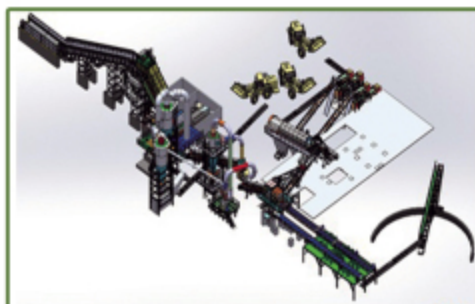
Shredder Production Line

采用美国纽维尔废钢破碎机全球领先技术，主营500—11000HP多功能废钢破碎生产线，破碎机使用年限长达20年以上，性能稳定，维护成本低，最高平均产能超过400吨/小时。
It adopts the world's leading technology of America Newell scrap shredders, and mainly produces the scrap shredder production line with 500-11000HP. The service life of the host can be more than 20 years. The highest average capacity is up to 400 tons/hour with low operating cost.



84 SXS 重型环保破碎机系统
电机配置3000—6000马力，破碎能力80—263吨/小时。

Heavy-duty environmental shredder system of 84 SXS
Motor with 3000-6000 HP, shredding capacity of 80-263 tons/hour



100 SXS 重型环保破碎机配套有色分选系统
电机配置4000—6000马力，破碎能力80—280吨/小时。

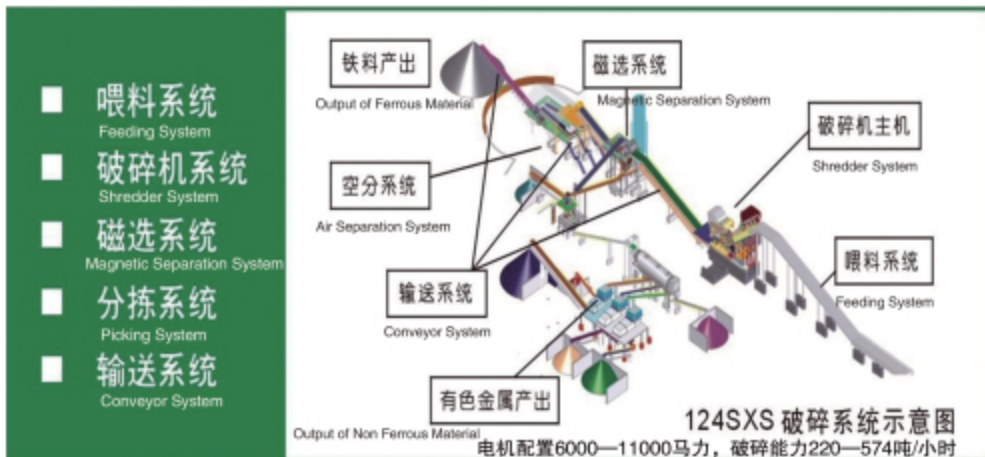
Heavy-duty environmental shredders of 100SXS equipped with the non-ferrous separation system
Motor with 4000-6000 HP, shredding capacity of 80-280 tons/hour



84 SXS型 4000匹马力废钢破碎生产线实景
Reality images of 84 SXS scrap shredding production line with 4000HP



100 SXS型 6000匹马力废钢破碎生产线实景
Reality images of 100 SXS scrap shredding production line with 6000HP



Sketch map of 124SXS shredding system
Motor with 6000-11000 HP, shredding capacity of 220-574 tons/hour

产品分类

Product Classification

剪切机

Shears

重型龙门剪切机型号及主要参数

Types and main parameters of heavy-duty gantry shears

型号 Type	功率 (千瓦) Power (kw)	剪切力 (吨) Shearing force (ton)	处理原料范围 Ranges of material to be processed	剪切箱体尺寸 (米) Dimension of shearing box (m)
KS972/173	180-220	900-1000	中型废钢及汽车壳体 Medium-sized steel scraps and automobiles housing	7.2
TG118/138	220-330	1100-1300	重型废钢、压块及汽车壳体 Heavy steel scraps, bales and automobiles housing	8.3
TS138/158	360-440	1300-2000	重型废钢、压块及汽车壳体 Heavy steel scraps, bales and automobiles housing	8.3

采用意大利成套技术，拥有50多年的设计制造经验，机型分为可移动式、半移动式 and 固定式等。剪切能力从500吨—2000吨，可直接处理压块和重型废钢。

The shears adopt the Italian technology with more than 50 years experiences in designing and manufacturing. The types are including mobile type, semi-mobile type, fixed type and etc. It can be used to deal with the bales and heavy steel scraps directly. The shearing capacity ranges from 500 tons to 2000 tons.

小型

CH

半移动式

CL

移动式

CM



固定式

KS



TG



TS

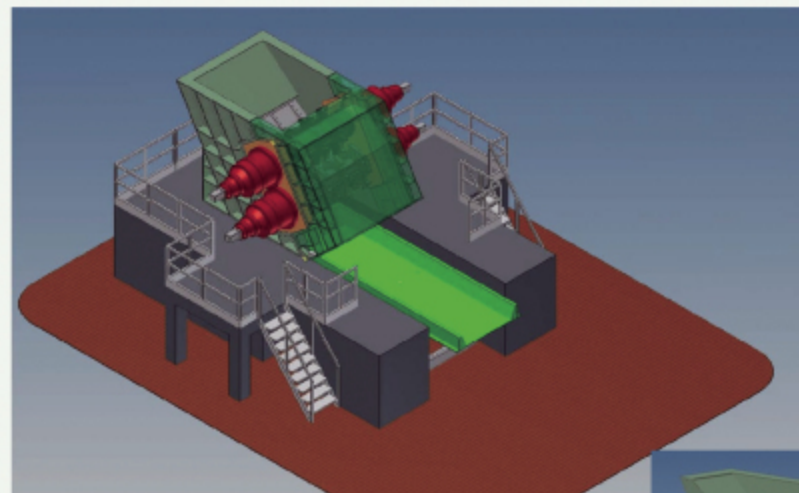


预破碎机

Pre-shredder

引进意大利先进设计理念及生产技术，采用全进口液压驱动系统，生产每小时产能20—125吨各型号预破碎机。

Adopting the imported hydraulic drive by introducing the Italian advanced design concept and manufacture technology, producing pre-shredders of various types with the capacity of 20-125 tons per hour.



预破碎机适用于汽车压块的拆包，报废车辆、轻抛金属废料的处理。通常配置在破碎系统的前部，以控制破碎料的粒度，均一进料，在提高破碎机效率的同时减低能耗。

It is especially suitable for the unpacking of automobile bales and processing of scrapped vehicles and light metal scrap, normally installed in the front of shredding system to control the granularity of materials and feed the materials evenly, so as to reduce the consumption while improving the shredder efficiency.



优点 Advantages

- 1、消除在破碎机腔体发生爆炸的可能性；
 - 2、降低破碎过程中的能耗；
 - 3、给破碎机提供预破碎、均一粒度物料，消除能耗高峰；
 - 4、显著延长破碎机侧衬板、格栅、锤头的使用寿命；
 - 5、通过接收并处理整车或废钢压块，增强小型破碎机的处理能力。
- 1、Eliminate the possibility of explosion in the shredder chamber.
 - 2、Reduce the energy consumption during shredding process.
 - 3、Provide the pre-shredding for shredders, uniform the granularity of materials, and eliminate the energy consumption peak
 - 4、Extend the service life of side plates, grates and hammers significantly.
 - 5、Enhance the processing capacity of small shredders by processing the complete vehicles or scrap bales.

产品分类

Product Classification

铸件

Casting

融合了美国纽维尔60多年使用破碎机经验，采用其专利技术和制造工艺在国内进行生产，提高国内铸件质量的同时进一步降低用户生产成本。

The castings are fabricated in China by adopting the patented technology and manufacturing process of America Newell with more than 60 years experiences in using shredders. The production cost can be further reduced while the quality of domestic castings is improved.



有色金属分选系统

Non-ferrous Separation System

选用先进有色金属分选设备，并融合纽维尔60多年处理有色金属垃圾的经验，为客户在废钢破碎线业务上创造可观的附加经济效益。

The use of advanced non-ferrous separation equipment, combined with Newell's 60 years of experience in handling nonferrous metal waste, creates the additional economic benefits for customers in the business of scrap shredding line.



抓钢机

Material Handler

纽维尔邦立抓钢机融合了纽维尔破碎机60多年的喂料经验，以及邦立精湛抓钢机制造技术，满足纽维尔破碎机高产需求。抓钢机采用国际顶级原件配置，系统可靠性高。同时，根据用户需求可提供电动液压、柴油液压移动式、固定式等多种型号。司机室内部宽敞舒适、视野宽广、隔音防尘，给操作者舒适安全的工作环境。

Newell Bonny material handler can meet the high yield demand of Newell shredders with more than 60 years of feeding experiences and the advanced manufacturing technology of Bonny material handler. Adopting international top components to ensure the system with higher reliability. The material handler can be provided with various types according to the needs of customers, including electric hydraulic type, diesel hydraulic mobile type, fixed type etc. The cab with large space and wide vision, dust-proof insulation provides operator a comfortable working condition.



产品介绍 Product Introduction

中再生纽维尔破碎机型号及主要参数

Types and main parameters of shredder

型号 Type	马力 (HP) Horse power	可破碎物料 Materials to be shredded	产能 (T/H) Capacity
4868	400-1000	铝、轻薄铁 Aluminum, Light iron scrap	4-10
6080	500-1500	铝、轻薄铁 Aluminum, Light iron scrap	5-30
6096LR	500-1500	不重于整车的轻薄料 Lightweight material not heavier than an automobile	5-50
60SXS	1000-3000	不重于整车的轻薄料 Lightweight material not heavier than an automobile	30-110
84SXS	3000-6000	轻薄料、中型料、加厚料 Light and thin material, Medium-sized material, Weighting material	70-236
100SXS	4000-6000	轻薄料、中型料、加厚料、压块 Light and thin material, Medium-sized material, Weighting material, Bales	80-280
124SXS	6000-11000	轻薄料、中型料、加厚料、压块 Light and thin material, Medium-sized material, Weighting material, Bales	220-570



可加工物料

Materials that can be processed

1. 卸掉油箱的汽车整体（整车或已经压扁的车体，未经捆扎）；
2. 密度小于1吨/立方米的成段车体，每段宽度和高度不得超过破碎机进料口的90%；
3. 密度不超过1吨/立方米的成包轻铁，每包宽度和高度不得超过破碎机进料口的90%；
4. 包括电器在内的各种轻铁废料，#2重熔、废钢压块以及一些#1重熔；
5. 截面厚度小于3/4英寸的建筑用型钢，18英寸标准工字钢；
6. 金属线制品，包括小于1英寸（25mm）电缆；
7. 直径为2英寸（50mm）的钢筋；
8. 不锈钢、废铝及压块废铝等。

1. Complete automobiles (Whole or flattened, not baled), with gasoline tanks removed.
2. Automobile logs with density of not more than 1 tons/m³. The width or height of the log cannot exceed 90% of the feed opening to the shredder housing.
3. Baled light iron with density of not more than 1 tons/m³. The width or height of the baled light iron cannot exceed 90% of the feed opening to the shredder housing.
4. All types of light iron scrap, including appliances, and material normally classified as #2 heavy-melting materials, scrap steel bales, and some grades normally classified as #1 heavy-melting material.
5. Structural shapes of steel with under 3/4 inch section thickness. The means that a standard I beam of about 18 inches can be shredded.
6. Wire products, including pieces of cable less than 1 inch (25mm)
7. Re-bar of two inches (50mm) diameter
8. Stainless steel, waste aluminum and baled waste aluminum etc.



核心竞争力

Core Competence

主机破碎系统

Newell Shredding system

- 主破碎机采用超厚壳体，并装备优良抗冲击性能板材，安全可靠。
- 动力输出表现强劲，同时配置液力变阻器，很好达到节能效果。
- 双进料辊设计，有效防止卡料及堵料现象，大大提高机器工作效率。同时设有不可破碎物排料门，减少不可破碎物对破碎机的伤害。
- 可配备干湿两种除尘系统，降低环境污染。

- The main body of shredder is made of ultra-thick housing and equipped with excellent impact-resistant plate, which is safe and reliable.
- The power output are strong enough. Meanwhile, the hydraulic rheostat is equipped to transmit the energy of the main motor to the rotor to the maximum, so as to achieve the effect of energy saving.
- The design of double feed roll can effectively prevent the blocking of materials, and greatly improve the working efficiency. The reject door can reduce damage to the shredder from unshreddable materials.
- Equipped with wet and dry dedusting system to reduce the environmental pollution.



▲ 破碎机主体 Main body of shredder



▲ 碟式转子 Disc Type Rotor



▲ 液压装置 Hydraulic Unit



▲ 双进料辊 Double Feed Roll (DFR)

产品介绍 Product Introduction

液压系统

Hydraulic System

- 液压系统采用世界知名品牌进口液压元件并配备无焊接管道系统，排除了焊渣等杂质对液压系统造成损坏的隐患。具有使用寿命长，运行可靠，维护成本低，工作效率高等优势。

The hydraulic system adopts the imported hydraulic components of a world famous brand, and is equipped with non-welded piping system to eliminate the damages caused by welding slag and other impurities. It has the advantages of long service life, reliable operation, low maintenance cost and high work efficiency.



进料系统

Feeding System



- 进料机的传动件包括履带板（刚性好，摩擦系数大，并非搭接钢板），进口液压马达，动力站，卡特彼勒链条及托辊传动件，质量可靠，运行稳定；采用液压驱动，速度响应极快，可以在极短时间内提高或降低转速，在破碎机自动运行时能够精准控制进料速度，较其它驱动方式具有显著优势。

The transmission parts of the feeding system include the crawler plate (good rigidity, high friction coefficient, not lapped steel plates), imported hydraulic motor, power station, caterpillar chain and roller transmission parts with reliable quality and stable operation.

Adopt the hydraulic drive with rapid response to increase or reduce the speed in the short time, and control the feeding speed accurately while the shredder running automatically, which has significant advantages over other driving methods.



主马达控制系统

Main Motor System

- 主电机采用破碎机市场知名电机品牌，德国萧驰电机，其产品全部经过多年在破碎机市场上的使用验证，质量可靠，保证了破碎机“心脏”主马达系统对整个系统提供动力的运转保障。同时我们可以根据需求提供国内一线品牌主电机供客户选择。

The main motor adopts the famous motor brand, German Schorch motor, which have been used in the shredder market for many years with reliable quality. Ensuring the main motor system, which is the "heart" of the shredder, to provide power for the whole system as running guarantee; At the same time, we can also provide the main motor of top domestic brands for customers to choose.



- 马达控制中心采用美国罗克韦尔（AB）公司产品，按照美国标准设计制造，适用于破碎机运行现场各种恶劣环境，性能稳定可靠，最大程度减少客户维护成本和故障停机时间，创造经济价值。

The motor control center adopts the products of America Rockwell (AB), designed and manufactured according to the American standards. It is suitable for all kinds of severe environment on the operation site of shredder with stable and reliable performance, which can reduce the maintenance cost and downtime of customers to the greatest extent and create economic value.



- 主马达控制系统采用德国MKS控制柜及液力变阻器。MKS公司针对破碎机马达使用工况进行了特殊设计，该型号不仅满足破碎机使用的各个工况要求，而且减小了对高压电网的冲击，使得高压电站的容量相应减少，从而减少用户电站容量费支出。

The main motor control system adopts German MKS control cabinet and hydraulic rheostat. MKS Company has carried out a special design for the using condition of shredder motor. It can not only meet the requirements of each working condition of shredder, but also reduce the impact on the high voltage power grid, so that the capacity of the high voltage power station is reduced correspondingly, thereby to reduce the user's power station capacity expenditure.



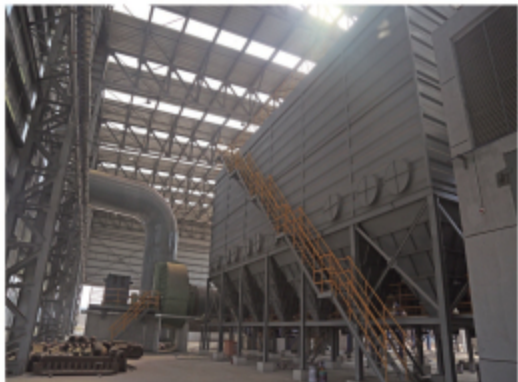
产品介绍 Product Introduction

环保系统

Environmental Protection System



▲ 智能喷水系统 Smart water injection system



▲ 大型除尘系统 Large dedusting system

- 智能喷水系统 Smart water injection system**
 破碎作业时智能喷水系统会在破碎机内进行高压喷水，喷水量与任一特定时间的破碎机实际产出成正比，水量恰当既有效降低粉尘又不浪费水资源，是破碎机防范和控制污染性价比最高又行之有效的方案。

The smart water injection system can make the high-pressure water injection in the shredder during equipment operating, and the amount of water injecting will be proportional to the actual output of the shredder at any given moment, which can effectively reduce dust and the waste of water resources. It is the most cost-effective way to prevent and control pollution.



▲ 高效空分系统 Efficient air separation system

- 大型除尘系统 Large dedusting system**
 根据客户不同要求采用不同的除尘系统。图为用户采用的布袋除尘系统，粉尘治理效果显著，清灰能力强、安全可靠，维护成本较低。

Providing the different dedusting system according to the customers' requirement. The type shows in the picture is airbag dedusting system, which has significant effect in the dust control with strong ability and low maintenance cost.

- 高效空分系统 Efficient air separation system**
 封闭式空分系统设计，达到除尘及令破碎料纯净的双重目的，国内客户较为普及，适应国家环保新要求。The air separation system with closed design can achieve the purpose of dust removal and ensure purity of shredding material. It is more suitable for domestic customers as it can meet the new requirements of national environmental protection.

智能控制系统

Smart shredding system(SSS)

- 该智能控制系统是美国纽维尔家族超过50年的经验与其破碎设备制造完美结合的体现。应用程序使破碎机高效运转，同时提供管理报告，使管理者有效掌控使用成本。同时该系统专门为中国客户开发了中文操作界面和手机客户端APP。

The Smart Shredding System is developed by Newell family with more than 50 years of experiences in use. The application program can make the shredder run efficiently and the operators control the operating cost based on the management report provided by the system. At the same time, it specially develops the Chinese language operation interface for the Chinese customers and APP.



杂铁回收系统

Tramp Ferrous Recovery System

- 杂铁回收系统是将经磁选站分选后的垃圾中的铁料再次回收。以年产量10万吨产量计算，可以多回收2%的铁料，为用户额外增加400万元收益。

The tramp ferrous recovery system aims to recycle the ferrous material in the waste separated by the magnetic separation station. If the annual production is calculated as 100,000 tons, 2% ferrous material can be more recycled, increasing an additional income of 4 million RMB for users.



双滚筒磁选系统

Double Drum Magnetic Separation System

- 采用双滚筒设计，通过两次分选使得破碎料更加纯净，破碎料销售价格较一般破碎料高出近100元每吨，深受各大钢厂青睐，提高用户经济效益。

The design of double magnetic drum makes the shredding material more pure by double separation. The selling price of this shredding material is nearly 100 yuan per ton higher than that of the general shredding material, which is favored by the major steel mills as it can improve the economic benefits of users.



产品介绍 Product Introduction

振动设备

Oscillating Equipment



▲ 振动出料机 Oscillating conveyor

振动出料机 Oscillating conveyor

振动出料机安装在破碎机出料口下方，采用纽维尔独特设计，全冲程式振荡器，提供恒定可靠性能，振荡盘角度平缓，较激振电机设计具有显著优势，同时装有可更换的耐磨板，坚固耐用，可以承受破碎机工作过程可能发生的爆炸而产生的过压。

Installed under the shredder mill with Newell unique design. The forced stroke oscillator can provide constant and reliable performance with gently angle of oscillating plate. This has a significant advantage compared with the vibrating motor design conveyor. This undershredder oscillating conveyor is supplied with a replaceable and durable wear-resistant plate, to withstand the overpressure caused by the explosion that may occur during the operation of the shredder.

高密度破碎料筛选机 High Density Screener

拥有纽维尔独家专利，可变的筛孔尺寸及振动形式，可以使破碎之后的粗、细铁料有效分离，并且顺畅通过，不堵料。在为客户提供高密度破碎料的同时，也为客户大大的节省了破碎机的能耗及铸件的消耗，降低了高密度破碎料的生产成本及所需设备的投资成本。

With Newell's exclusive patent, variable screen size and vibrator, the shredded ferrous can be separated effectively and passed smoothly without blockages. It will not only provide high density FE according to customer's requirement, but it will also save a lot of energy and casting consumption, reducing the investment and operating costs for production of high density Fe.



▲ 高密度破碎料筛选机 High Density Screener

振动给料机 Vibrating Feeder

采用专业结构设计，通过的物料振动摊开，均匀喂料给分选设备，使得分选效率和质量大幅提高。

Adopt the professional design. Material can be spread out by vibrating and fed evenly to the separation equipment, which can greatly improve the separation efficiency.



▲ 振动给料机 Vibrating Feeder

有色金属分选设备

Non-Ferrous Separation Equipment

涡流分选机 Eddy current separator

能够有效地将有色金属从磁选后的垃圾中分离出来，对多种非铁金属有良好的分选效果，同时对各种物料适应性强安装方便，操作简单，维护成本低，市场表现优异。

The eddy current separator can separate the non-ferrous materials efficiently in the waste after magnetic separation, and work well on the separation for a variety of non ferrous metal. Meanwhile, it is suitable for various materials with convenient installation, simple operation, low maintenance cost and excellent market performance.



▲ 涡流分选机 Eddy current separator

棒状长物料分选机 Poker separator

主要用于去除破碎料中较特殊的长金属材料，如汽车减震板簧，钢筋，圆钢等。一般都是较细长的物料，这些物料因为较细，有机会会通过破碎机设置的筛孔，从而对下游输送机及其它分选设备具有非常大的危害，如割裂皮带机，卡停下游旋转部件等等。

该分选机一般安装在破碎机下序第一条输送带落料口处，最大限度保护下游设备。该分选机直径为18英寸，宽度可以依据皮带宽度进行定制，一般为36英寸到96英寸之间，可以匹配目前市场上所有的废钢破碎生产线。

This separator is used to remove the long, troublesome pokers like automotive leaf springs, rebar, round bar and other slender materials. As these materials are relatively fine, they can pass through the screen hole set by the shredder, which will make the great damage to the downstream conveyor and other sorting equipment, such as the belt conveyor, and other downstream rotating parts and so on.

Generally, the separator is installed at the discharge of the first conveyor from the shredder to protect the downstream equipment to the utmost extent.

Belt-driven poker separators are 18-inches in diameter and available in a range of sizes from 36-96 inches wide to meet all the scrap shredding production lines in the current market.



▲ 棒状长物料分选机 Poker separator

产品介绍 Product Introduction

输送系统

Conveyor System

输送系统是连接整个破碎设备的重要部件，包括破碎料提升皮带机；分选后铁料输送皮带机；铁料分拣皮带机；铁料堆垛皮带机；有色物料及垃圾传送皮带机；铁料回收皮带机；有色料传送皮带机；垃圾堆垛皮带机等。
The conveyor system is the key part in connecting all the shredding equipment, including shredding elevating conveyor, ferrous transfer conveyor, ferrous picking conveyor, ferrous stacking conveyor, non ferrous and waste transfer conveyor, tramp ferrous recovery system, non ferrous transfer conveyor, waste stacking conveyor and so on.



物料分流槽：设计合理的流向及角度，满足系统高生产能力的同时，又兼顾了磁选设备的通过能力，有效保障了破碎料的分选质量。

Material splitter trough: design of reasonable flow direction and angle to meet the high production capacity of the system as well as the passing capacity of magnetic equipment, and effectively ensure the separation quality of shredding material.



堆垛皮带机：大大提升物料的堆垛能力，同时在皮带机上配备知名品牌皮带秤，使得系统对物料的产出量进行实时监控。

Stacking conveyor: the conveyor is equipped with a well-known brand of belt scale to monitor the output of material in real time that helps the shredder operator to improve performance.

纽维尔设计采用的输送设备考虑了破碎机运作的物料特性，将60多年使用经验及技巧融合在看似简单的皮带机中，大大降低输送设备故障对整个系统造成停机的概率，同时促进整个系统的自动化控制得以顺利实现。

The conveying equipment designed by Newell is based on the material characteristics of the shredder operation with more than 60 years of usage experiences, which greatly reduce the downtime of the system caused by the failures of conveying equipment and it promotes the automatic control of the entire system.



售后服务及备件供应

After-sales service and spare parts supply

纽维尔在国内拥有健全的售后服务及零配件供应中心，提供7天24小时售后服务。公司工程师均通过纽维尔专业技术培训认证，可以提供破碎机安装指导、操作培训、维护保养等服务。同时纽维尔美国技术专家常驻中国提供技术支持，可以使客户问题在最短时间内得到有效解决。

Newell has the perfect after-sales service and spare parts supply center in China, providing 24/7 after-sales service. The engineers are all certified by Newell professional technical training, which can provide the installation guidance of the shredders, operation training, maintenance etc. Meanwhile, Newell American technical experts are resident in China to provide technical support, which can allow customer problems to be effectively solved in the shortest time.



公司在国内备有常用铸件及备件库存，当客户急需时，我们可以在第一时间将备件送达，减少停机时间，保障生产。同时，为满足国内众多客户需求，锤头、格栅、衬板等铸件均采用美国纽维尔工艺在国内制造，并由纽维尔专家全程监控质量，用户在得到纽维尔品质铸件的同时大大降低了采购成本，产品具有较高性价比。

The company has the inventory for common castings and spare parts in China, We can deliver spare parts in the first time to reduce downtime and ensure production. Meanwhile, the castings, such as hammers, grates, liners etc., are all fabricated in China in accordance with the procedure of America Newell in order to meet the needs of many domestic customers, and monitored by the Newell specialists during the process. The customers can get the high quality casting product with low procurement cost and high performance.





了解纽维尔

About the Newell and Shredders



1994年美国机械工程协会授予纽维尔破碎机发明为美国机械工程发展史上的里程碑



1959年，纽维尔发明全球第一台废钢破碎机并在使用中不断改进优化。
1994年，美国机械工程协会授予纽维尔破碎机发明为美国工程发展史上的里程碑。
1994年，我国第一条废钢破碎生产线由广州钢铁股份有限公司从美国纽维尔公司引进。
2006年，纽维尔10000马力破碎机在徐州投产，创造平均产能400T/H记录。
2008年，纽维尔成立中国技术服务中心，使客户的设备最快的投入使用。
2008年，纽维尔在中国合作生产破碎机。
2012年，纽维尔第一条移动式破碎机在广州佛山投产。
2012年，纽维尔金属资源回收设备（深圳）有限公司成立。
2017年，中再生纽维尔资源回收设备（江苏）有限公司成立，在中国独家生产及销售纽维尔金属资源回收设备。
2017年，中再生纽维尔与江苏沙钢集团签订多台破碎线采购协议。
2017年，纽维尔破碎机在中国市场的理论破碎产能可满足全国废钢破碎需求的50%以上。
2018年，中再生纽维尔设计制造的国内首条11000马力破碎线在河南安阳投产，小时产能轻松突破400吨。
2021年，纽维尔10000马力废钢破碎机在中国拥有10条生产线，市场份额遥遥领先。

100%

技术领先
Leading Technology

100%

精益求精
Endless Striving for Excellence

100%

创造财富
Creating Wealth

- 世界废钢破碎机市场，一直有“破碎机就是纽维尔，纽维尔就是破碎机”的美誉；
It enjoys the reputation all over the world as "The Scrap Shredder is Newell, Newell is the Scrap Shredder" in the global scrap shredder market.
- 美国纽维尔公司是一家集发明，设计，制造，使用，改进于一身的公司；
America Newell is the professional company with the invention, design, manufacture, usage and improvement.
- 美国纽维尔公司于1959年发明全球第一台废钢破碎机并实际使用中不断改进优化；
In 1959, Newell invented the world's first scrap shredder, and kept continuous improvement and optimization in use.
- 实用、简单，最低使用成本是纽维尔公司一直不懈的追求；
Practical, simple, and lowest cost of use is Newell unremitting pursuit
- 纽维尔品牌破碎机，其智能化、节能控制系统是纽维尔公司多年总结研发的结晶；
The smart shredding system (SSS) is the crystal coagulated from years' research and development of Newell.
- 可靠、实用、模块化的部件设计，强壮的破碎机主体，破碎机使用年限超过20年；
The main body of shredder is strong enough with reliable and modular component design. The service life of the shredder can be more than 20 years.
- 全球近1000套大型破碎机系统有500多套为纽维尔提供，采用纽维尔技术生产的破碎机占78%的比例（根据世界废钢破碎机协会统计数据），是破碎机行业对纽维尔破碎机品牌极大的认可。
More than 500 sets of large shredder systems among the world's nearly 1,000 sets were provided by Newell. The shredders manufactured by adopting Newell technology occupy 78% (according to the statistics of the world scrap shredder association), which is the great recognition for Newell brand from the shredder industry.

NEWELL MEMORABILIA

IN 1959
NEWELL INVENTED THE WORLD'S
FIRST SCRAP SHREDDER, AND
KEPT CONTINUOUS IMPROVEMENT
AND OPTIMIZATION IN USE.

IN 2015
ISRI PRESENTS TO SCOTT NEWELL
THE LIFETIME ACHIEVEMENT AWARD.

IN 2021, THERE ARE 10 NEWELL
SHREDDER PRODUCTION LINES WITH
10000HP IN CHINA, WHICH IS FAR
AHEAD IN THE MARKET SHARE.

IN 1994
THE AMERICAN SOCIETY OF
MECHANICAL ENGINEERS
DESIGNATED THE NEWELL
SHREDDER AS A LANDMARK
IN THE HISTORY OF AMERICAN
ENGINEERING.

IN 2017
THE CAPACITY OF NEWELL
OCCUPY MORE THAN 50% OF
THE SHREDDING DEMAND IN
CHINA MARKET.

IN 2018
THE WORLD'S FIRST SHREDDER
WITH 11,000HP WENT INTO OPERATION
DESIGNED AND MANUFACTURED BY
CHINA RECYCLING NEWELL, THE
PRODUCTION CAPACITY CAN EASILY
EXCEED 400 TONS PER HOUR.

客户案例 Customer Examples



江苏张家港破碎生产线直接破碎废钢压块，被客户誉为“真正的钢铁侠”
The shredding production plants in Jiangsu Sha-steel can shred the bales directly, known as the "real iron man" by the customer.

中再生纽维尔资源回收设备（江苏）有限公司
CHINA RECYCLING NEWELL EQUIPMENT (JIANGSU) CO.,LTD.



山西太钢投产的10000匹马力纽维尔多功能破碎机系统，既可以破碎普通废钢，又可以达到生产不锈钢降温炉料的功能，为客户节省了一套破碎系统的投资。

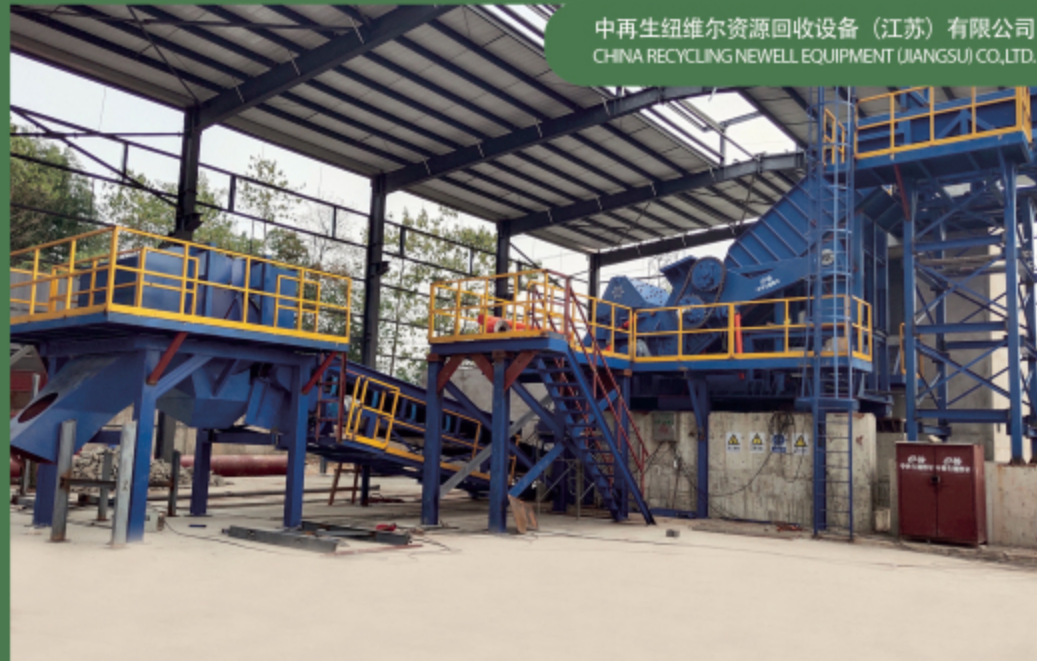
The Newell multifunctional shredder system with 10000HP put into production in Shanxi TISCO can not only shred the common steel scrap, but also achieve the function of producing stainless steel cooling furnace charge, saving the investment of one set of shredding system for customers.



河南安阳11000匹马力项目，全球最高马力废钢破碎机，创造破碎机产能新记录，每小时产能轻松突破400吨。
The shredder project with 11,000HP in Anyang, Henan, is the highest horsepower scrap shredder in the world, setting a new record for shredding capacity, which can easily exceed 400 tons per hour.



宁夏4000匹马力破碎线，设备运行稳定可靠，防噪音及除尘效果理想，得到客户和环保部门高度认可。
The shredder production line with 4000HP of Ningxia Project, runs stably and reliably with significant effect of sound proof and dust removal, which are highly recognized by customers and environmental protection department.



湖北600匹马力破碎线，该项目采用纽维尔研制的全新一代48SXS机型，占地面积小，产量高。
The 600HP shredder line project in Hubei adopts the new generation of 48SXS model developed by Newell, which covers a small area and has a high yield.



2018年投产运行的纽维尔3000匹马力破碎线，可直接破碎报废整车，年产能高达20万吨。
The Newell shredder production line with 3000HP, which was put into operation in 2018, can shred the scrapped automobiles directly, and the annual capacity can reach 200,000 tons.



中再生纽维尔向沙钢提供的两台废钢预破碎机正在处理废钢压块，该生产线为国内首条进口预破碎机生产线。
The two sets of pre-shredders provided by China Recycling Newell to Sha-steel Group are dealing with the scrap steel bales. It is the first imported pre-shredder production line in China.



河南洛阳纽维尔6000HP废钢破碎线，生产高密度纯净破碎料，产品深受周边钢厂青睐。

Newell 6000HP Shredder Production Line work in Luoyang plant, Henan, produce the pure shredded material with high density, which are favoured by the surrounding steel mills.



浙江湖州纽维尔3000HP废钢破碎线，用户主要破碎报废汽车，是客户业务发展的一把利器。

Newell 3000HP Shredder Production Line work in Huzhou, Zhejiang, is mainly used for shredding the scrapped vehicles, which has become the extraordinary product equipment in user's business development.



济钢集团纽维尔6000HP废钢破碎线，每小时产能达到150吨—200吨，年废钢加工能力高达40万吨。

Newell 6000HP Shredder Production Line work in Ji Steel Group, the production capacity can reach 150-200 tons per hour, and the annual processing capacity of scrap steel can reach 400,000 tons.



2010年，张家港华仁引进了一条美国纽维尔6000HP废钢破碎线，自设备投产以来每年稳定高效运行超过300天。

In 2010, Zhangjiagang Huaren introduced one set of Newell 6000HP Shredder Production Line, and has been running steadily and efficiently for more than 300 days every year since the production.



纽维尔产品国内客户分布图

部分合作客户



沙钢集团



山钢集团
SD STEEL



荣程集团



新三洲



ZENITH
中天钢铁



正丰钢铁



太原钢铁(集团)有限公司
TAIYUAN IRON AND STEEL (GROUP) CO., LTD.



格林美
资源有限 循环无限
LIMITED RESOURCES UNLIMITED RECYCLING



湖北金盛兰冶金科技有限公司
HUBEI JINSHENGLAN METALLURGICAL TECHNOLOGY CO., LTD



宁夏钢铁集团
NINGXIA IRON & STEEL GROUP



MIZUDA